

**MODEL: FG-MSI-Kit**

**Manual Spark Ignition Kit**  
(For Use with Outdoor Firepits)

**Installation and Operating Instructions**

**IF YOU CANNOT READ OR UNDERSTAND THESE INSTALLATION INSTRUCTIONS DO NOT ATTEMPT TO INSTALL OR OPERATE THIS APPLIANCE**



**Warning:** For Outdoor Use Only

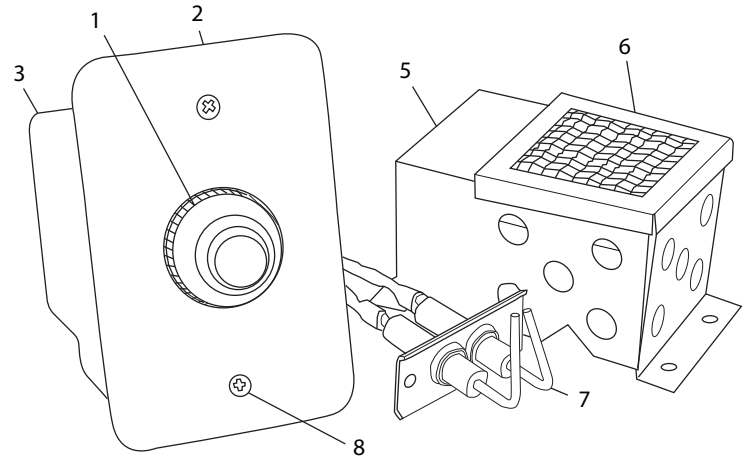


**PLEASE RETAIN THIS MANUAL FOR FUTURE REFERENCE**

**DESCRIPTION:** This piezo spark ignition kit is designed to be installed with a **firegear** outdoor fire pit burner pan. It uses a AAA battery inside the ignitor module and push button simplicity to light a fire pit burner with spark ignition.

## CONTENTS:

1. (1) - Manual Spark Ignitor Module (ST3-040-1020)
2. (1) - Module Cover Plate (AT3-100-1027)
3. (1) - Plastic Junction Box (FG-Junction Box)
4. (1) - AAA Battery - not shown (ST1-060-1004)
5. (1) - Ignition Hood (ST3-100-1031)
6. (1) - Ignition Hood Screen (ST3-100-1027)
7. (1) - 2-Probe Manual Spark Ignitor (AF-5000DSI2P03)
8. (2) - #6 x 3/4 pan screws (used with #2 cover plate)
9. (1) - Extension wire - not shown (PIEZO23WH)
10. (1) - Extension wire -not shown (PIEZO25WH)
11. (6) - Thread Cutting Stainless Screws (not shown)



## PREPARING THE FIRE PIT BURNER PAN FOR THE 2-PROBE SPARK IGNITOR

**Step #1:** Loosen the conduit nut at the bottom of the burner pan securing the flat washer and **firegear** firestar burner. Ensure one leg of the firestar burner is next to the 1.375 x .625" hole in the pan. **Note:** If a metal plate is covering the rectangled hole remove it to install the probe assembly in its place.

**Step #2:** Insert the probe wires first into the top of the burner pan hole and secure the probe with two thread cutting stainless screws.  
See figure #1.

**Step #3:** Align the tip of the probe overtop of a burner port hole for proper ignition (see figure #2). Retighten the conduit nut on bottom of burner pan to secure the fire star burner into place.

**Step #4:** Place the ignition hood overtop of the probe and secure hood with four (4) thread cutting stainless screws.

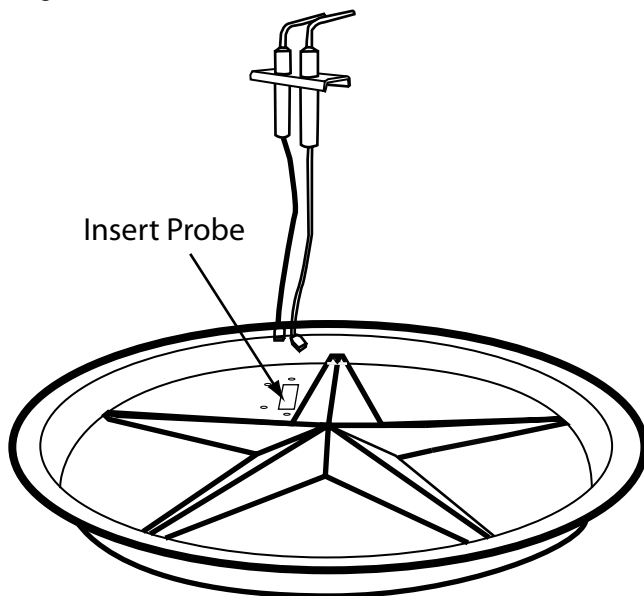


Fig. 1 Installing Probe.

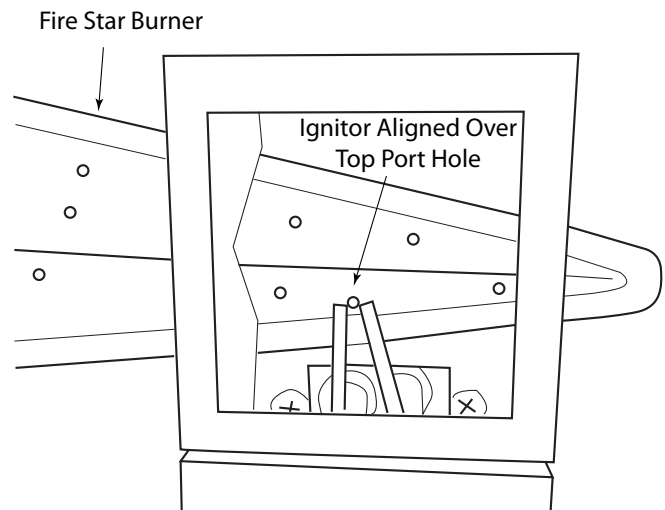


Fig. 2 Probe Ignitor Alignment

**Step #5:** Mount the plastic junction box within 40-inches of the 2-probe piezo ignitor. This will allow enough “*play*” in the wires to make your connections.

**Step #6:** Unscrew (counter-clockwise) the piezo ignitor module red button cap and the plastic mounting nut (see figure 3 & 4).

**Step #7:** Slide the module on the back side of the module cover plate and secure with the plastic mounting nut.

**Step #8:** Insert the positive end of (1) AAA battery into the ingitor module and carefully screw the red button cap to the ignitor module until snug. Careful not to overtighten the cap. See figure 4.

**Step #9:** Attach the extension wires (PIEZO23/25WH) to the 2-probe spark ignitor.

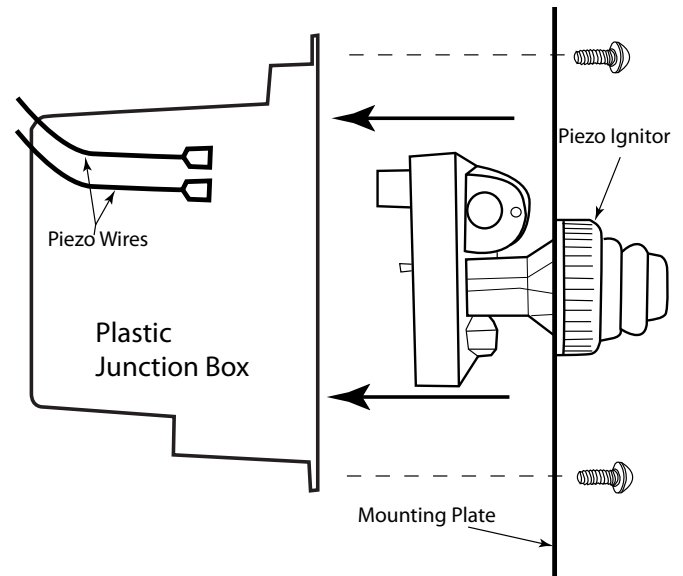
**Step #10:** Bring the extension wires through the plastic box and plug them into the spark ignitor module.

**Step #11:** Mount the module cover plate into the plastic junction box. See figure 3.

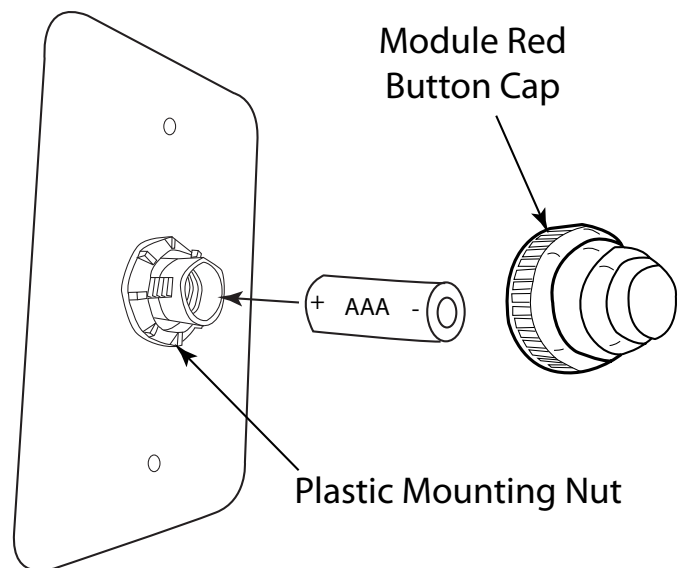
**Step #12:** Test the ignitor by pushing and holding the red button to ensure the 2-probe ignitor is sparking inside the ignition box in the burner pan. The spark should be located directly overtop of the burner port hole for proper ignition of the gas as previously discussed. Spacing between the probes should be approximately 1/8-inch for proper spark.

**Step #13:** Install the burner pan into the fire pit enclosure and install the ignition hood screen on the igniton hood.

**Step #14:** Installation is now complete. Install the lava rock/media material according to the fire pit installation instructions.



**Fig. 3.** Securing piezo module to the junction box.



**Fig. 4** Unscrew mounting nut and red button cap. Secure nut, install battery and re-attach red button cap.

## LIGHTING INSTRUCTIONS

### **READ ALL LIGHTING INSTRUCTIONS BEFORE ATTEMPTING TO LIGHT FIRE PIT**

**CAUTION:** Ensure you have leak tested the fire pit before operating.

**WARNING: Do not stand over Fire Pit during ignition or operation due to high surface temperatures.**

1. Push and hold the red button on the manual Piezo ignitor and ensure sparking is occurring at the probes inside the fire pit.
2. Turn **ON** gas supply.
3. Gas should ignite within 10 seconds or less. If fire pit does not light within 10 seconds turn **OFF** the gas supply. Check ignitor probe location (Fig. 2), ensure there is an 1/8" gap between the probes with a good strong spark then repeat steps 2 through 4.

After fire pit lights flame color adjustment can be made turning the air shutter nut under the burner pan. It is recommended that the nut be OPENED until the gas/air mixture makes a rushing sound (like a blow torch); then slowly CLOSE until the rushing sound diminishes. A desirable flame is bright yellow with little or no brown at the tips. Too yellow flame can create excessive sooting. See your fire pit instructions for further details.

### **LIMITED WARRANTY**

**firegear** warrants the FG-MSI-KIT for 12 months from the date of purchase or installation to the original purchaser to be free from defects in materials and workmanship. Damage to the FG-MSI-KIT caused by accident, misuse, abuse, or installation error, whether performed by a contractor, service company, or owner, is not covered by this warranty.

**firegear** will not be responsible for labor charges and/or damage incurred in installation, repair, replacement, or for incidental or consequential damage. Some states, provinces, and nations do not allow exclusion or limitations of incidental or consequential damages, so the above limitations or exclusions may not apply. This warranty gives you specific legal rights. You may also have other rights that vary by state, province, or nation.

**FOR TECHNICAL SERVICE CONTACT:** (855) 498-8324

**firegear** Outdoors  
9230 Conservation Way  
Fort Wayne, IN 46809  
For Sales: (888) 672-8929  
**Web Site:** [www.firegearusa.com](http://www.firegearusa.com)